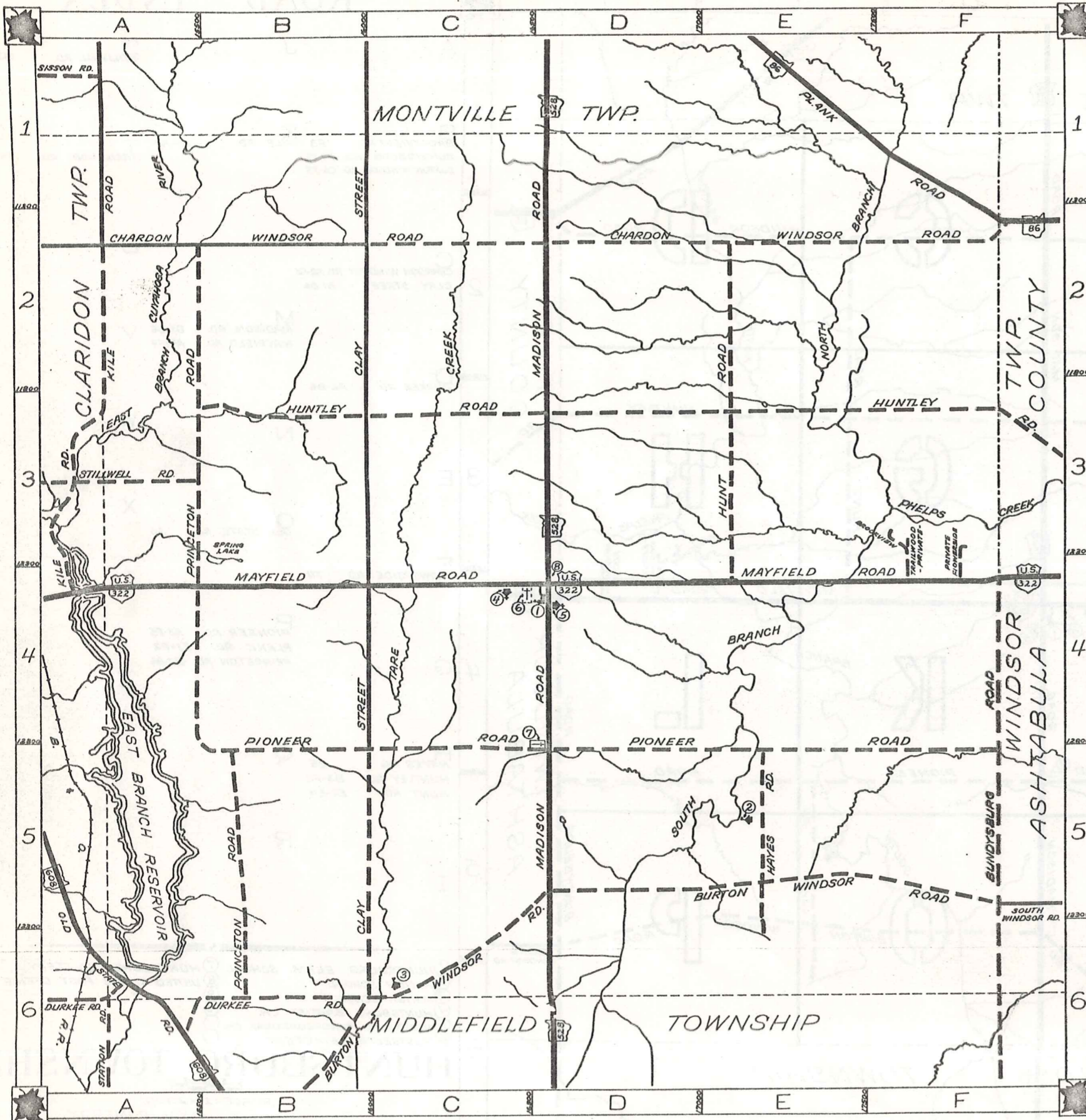




# ROAD INDEX



A	J	STILLWELL RD.	A3
B	K	BROOKVIEW RD. F3 BUNDYSBURG RD. F4-F6 BURTON WINDSOR RD. C6-F5	KILE RD. A1-A4 TRAILWOOD RD. F4
C	L	CHARDON WINDSOR RD. A2-F2 CLAY STREET B1-B6	U
D	M	DURKEE RD. A6-B6	MADISON RD. D1-D6 MAYFIELD RD. A4-F4 V
E	N		W
F	O	OLD STATE RD. A6	X
	P	FLOWERSIDE RD. F4	Y
	Q	PIONEER RD. B5-F5 PLANK RD. E1-F2 PRINCETON RD. B2-B6	Z
	R	HAYES RD. E5 HUNTLEY RD. B3-F3 HUNT RD. E2-E4	

- ① HUNTSBURG ELEM. SCHOOL
- ② AMISH SCHOOL
- ③ AMISH SCHOOL
- ④ HUNTSBURG BAPTIST CH.
- ⑤ HUNTSBURG CONGREGATIONAL CH.
- ⑥ HUNTSBURG CEMETERY
- ⑦ HUNTSBURG CEMETERY
- ⑧ UNITED STATES POST OFFICE
- ⑨
- ⑩

## HUNTSBURG TOWNSHIP

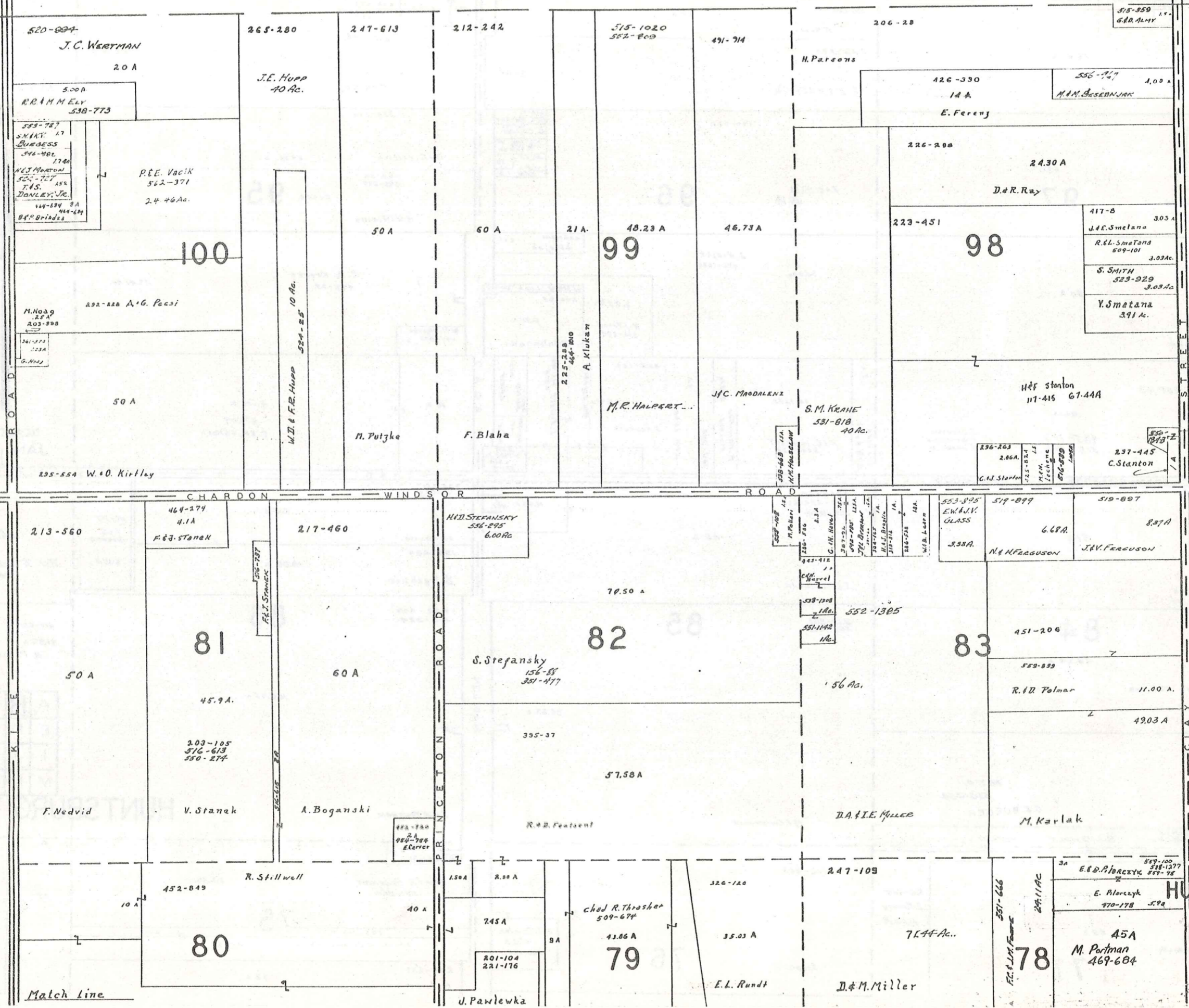
SCALE: 1" = 2000'  
 O.J. ROBINSON  
 GEALGA COUNTY ENGINEER

--- UNPAVED ROADS  
 --- TOWNSHIP LINE  
 --- PAVED ROADS  
 --- COUNTY LINE

MONTVILLE TOWNSHIP

TOWNSHIP

CLARIDON



SCALE 1 300  
JAN. 1974

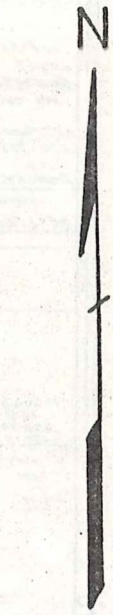
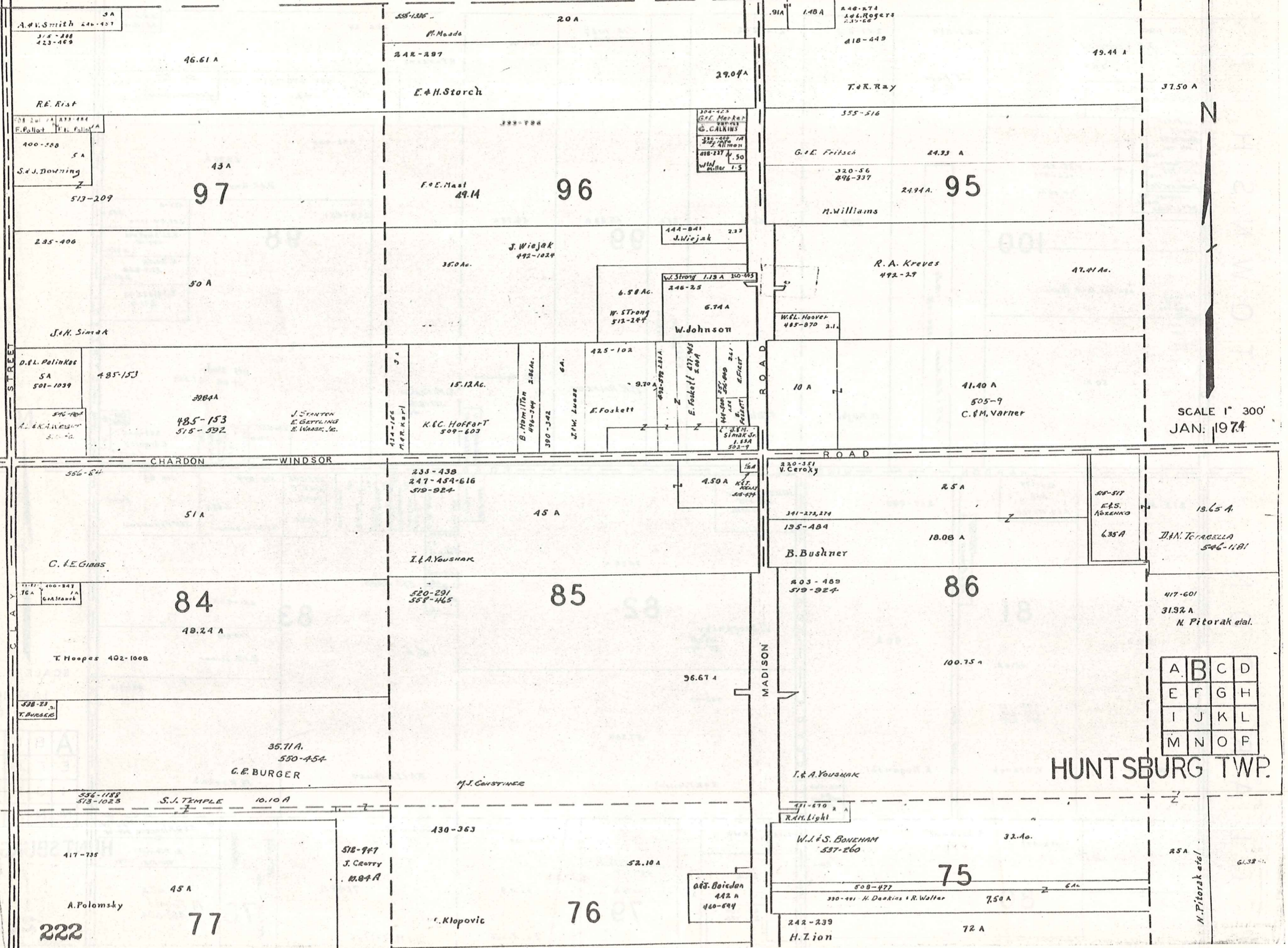
A	B	C	D
E	F	G	H
I	J	K	L
M	N	O	P

HUNTSBURG TW

221  
Match line

MONTVILLE

TOWNSHIP



SCALE 1" = 300'  
JAN. 1974

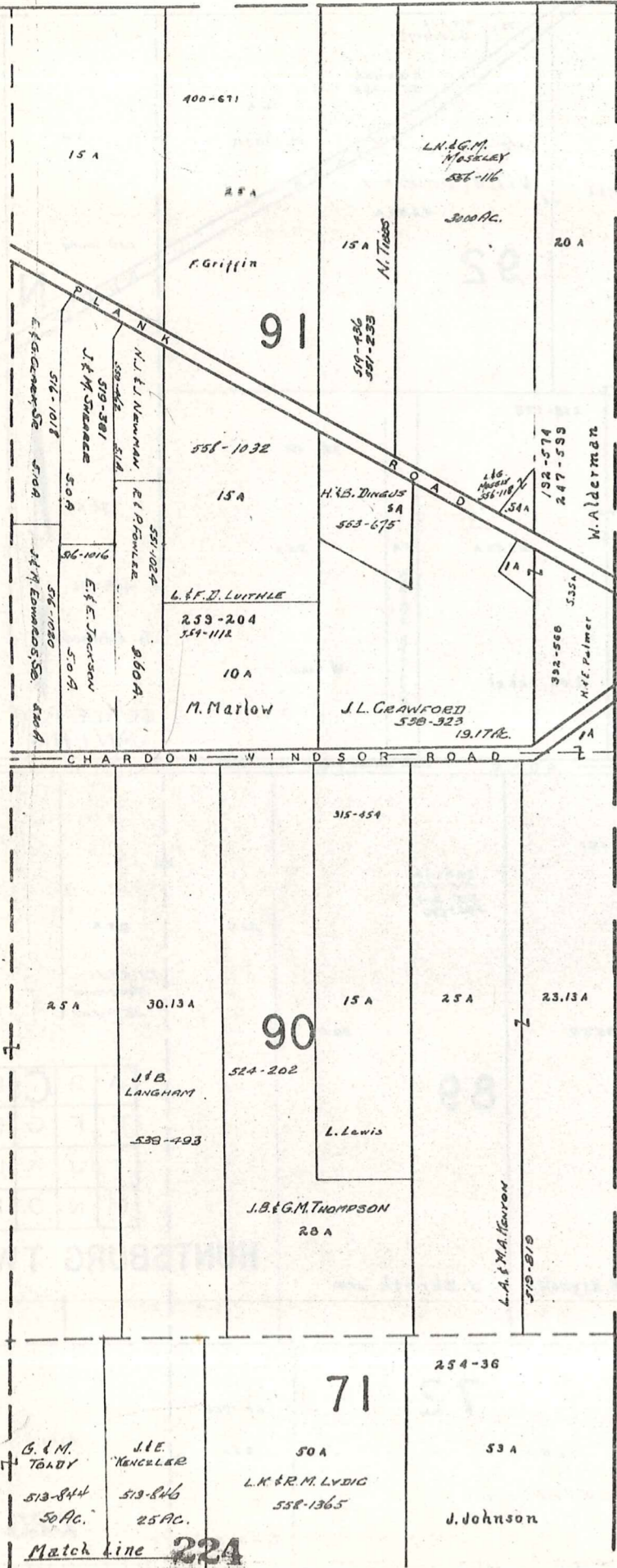
A	B	C	D
E	F	G	H
I	J	K	L
M	N	O	P

HUNTSBURG TWP.



MONTVILLE TWP.

A S H T A B U L A C O U N T Y



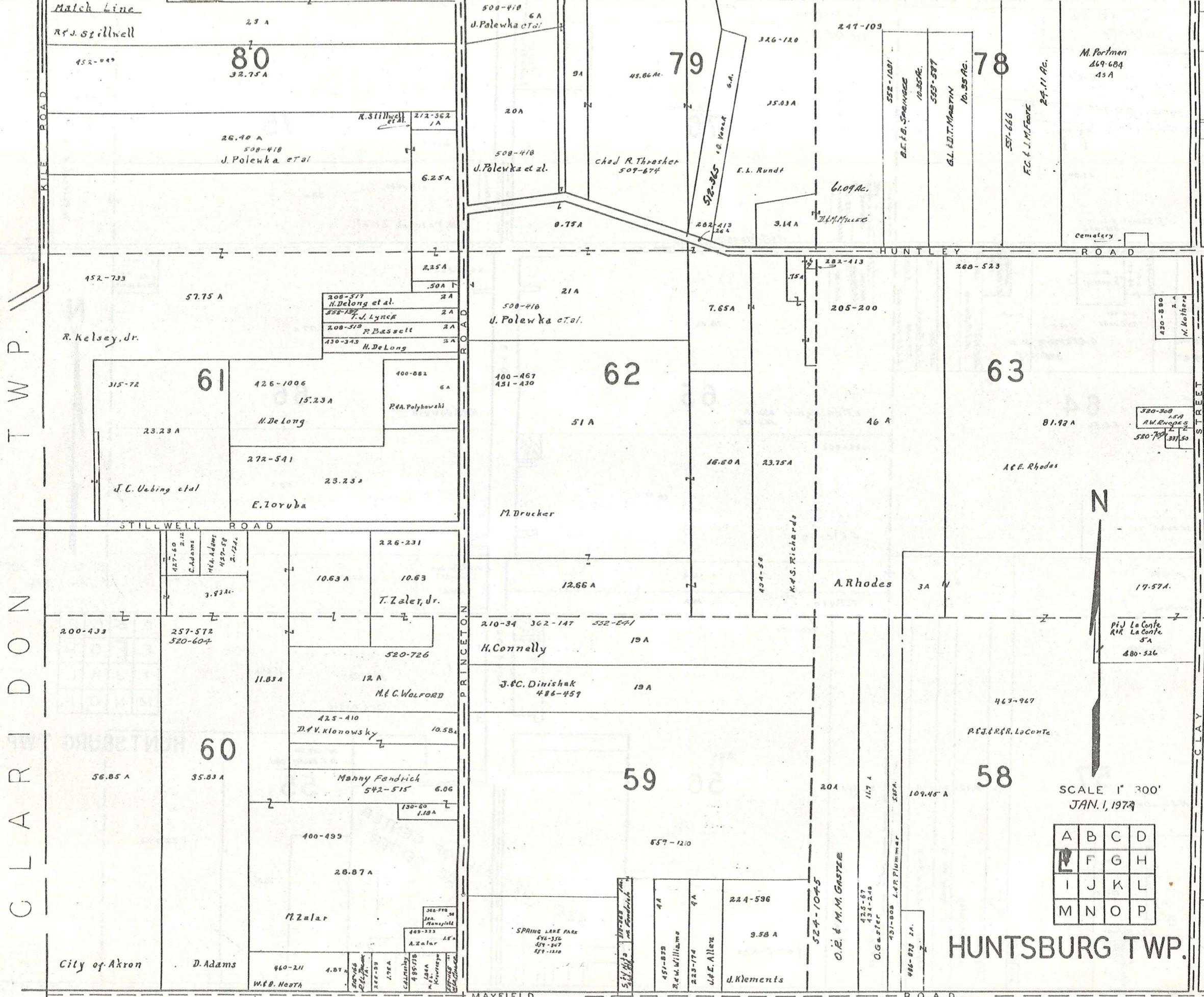
SCALE 1"=300'  
 JAN. 1, 1974

A	B	C	D
E	F	G	H
I	J	K	L
M	N	O	P

HUNTSBURG TWP.

Match Line

Match Line

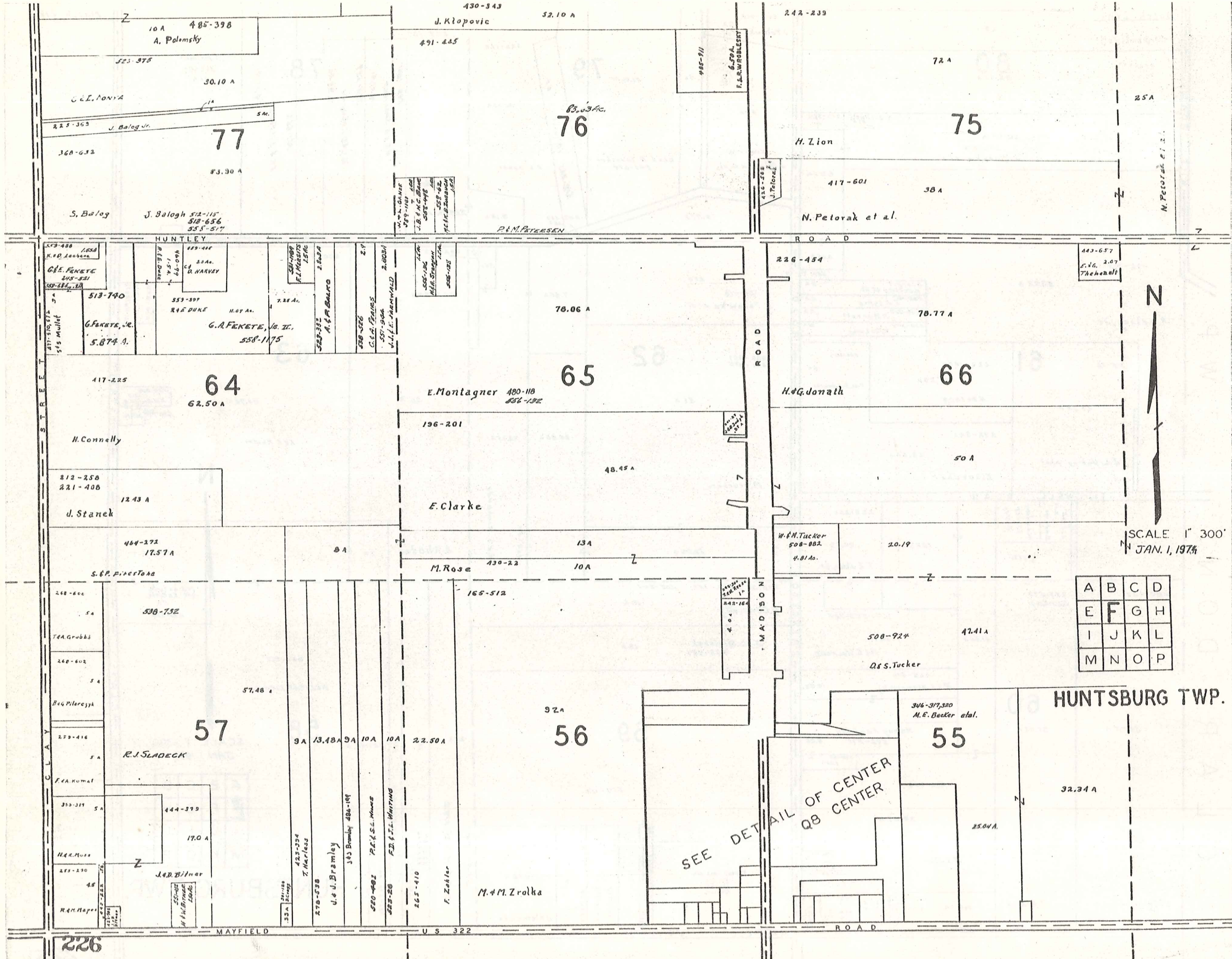


CLARIDON TWP.

CLAY STREET

A	B	C	D
E	F	G	H
I	J	K	L
M	N	O	P

HUNTSBURG TWP.



SCALE 1" = 300'  
 JAN. 1, 1974

A	B	C	D
E	F	G	H
I	J	K	L
M	N	O	P

SEE DETAIL OF CENTER  
 Q8 CENTER

HUNTSBURG TWP.

226

MAYFIELD

US 322

ROAD

Match Line

Match Line

74

73

72

71

67

68

69

70

54

53

52

51

25 A  
61.32 A  
R.M. Fisher 480-948

N.K.R. Ransoh

M. Speyer  
470-876  
53,400 A

12.5 A  
K.C.B. Cooney  
509-705

25 A  
513-844  
G.M. Toloy

25 A  
513-500  
J.C. McNeill

48.40 A  
552-620  
R.S. Ly. Page  
10.0 Ac.  
L. E. Lane

510-223  
50.74 A  
246-530  
50.74 A

558-857  
M.E. & F.L.  
Christiansen  
500 Ac.

J. E. Antene

242-447  
576-10  
50 A

C. Hart 470-773  
10 A

212-93  
A.G.H. Parry  
441 A

G.V. & G. Henson

A. HALODA 10A

45.59 Ac.  
311-35  
435-630

430-1013

M. Stugel 419-844  
46.50 A

B.H. Stillman 2A  
477-119

A. Tamas 272-32  
1.0 A

495-976

H.G. & J.S. Fix  
532-975  
38.50 A

16 A  
508-924

E.M. STRINGLEE  
2A  
532-170

434-833  
16 A

Baptist Mid-Missions

520-913

2.5 A

D. & S. Tucker

S. & J. Hoffman  
425-627

M. Linver

R.G. & J.M. CUNGER

S.E. Mullner

342-13,15,17  
557-761, 762, 763, 764, 765, 766

200-39  
225-349

2.5 A

45 A

82.75 A  
W.M. Becker

65.50 A

224-585

S. D. Cahn et al

T. G. Noll 508-926 5A  
257-395 5A  
Pilarczyk Bros.  
M.A. Ross 476-873

194  
427-675  
J. Lepa  
559-1370  
536  
C.L. Holzman  
573-256  
598 A  
E.B. Williams  
E.F. Varner

G.W. Rindel 492-785

J. Dran 53

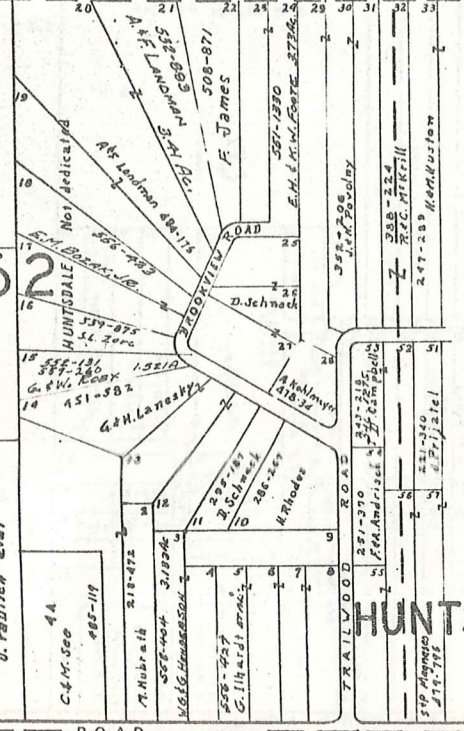
85.38 A

M. M. Kaufman  
559-173

A. Wahl

235-176  
3.42  
L.A. EGZRA

352-263  
10 A  
J. Paulich et al  
C.H. See  
44  
485-119  
M. Hubraib 318-472  
504-404 318-964  
K.B. Hennessey  
508-757  
G. L. H. et al  
246-247  
H. Rhodes



A	B	C	D
E	F	G	H
I	J	K	L
M	N	O	P

HUNTSBURG TWP.



JAN. 1, 1974  
SCALE 1" = 300'

H. L. McELROY - 556-753

Match Line

254-36

71

50 A

558-1565

L.H. & M. LYDIG

J. Johnson

53 A

A S H T A B U L A C O U N T Y

J. & M. Taylor  
512-500  
50 Ac.

J. & M. Taylor  
25 Ac.  
513-846

HUNTLEY ROAD

430-1013

70  
75 A

70.75 A

S. & E. Mullner

N. M. Whitney 484-265

225-09

51  
22 A

41.50 A

J. Sopotak

TRAILWOOD ROAD

MAYFIELD ROAD

228

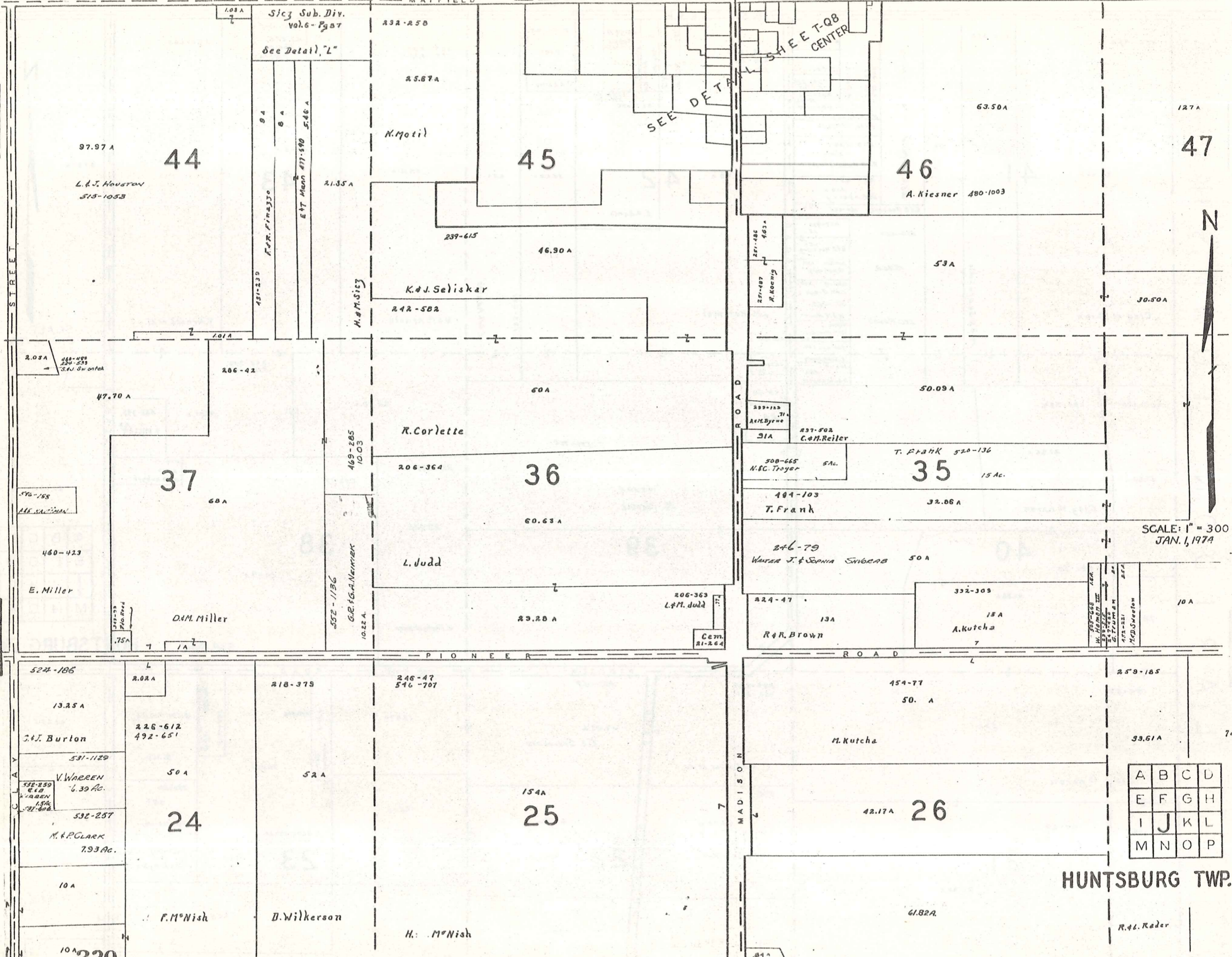


JAN. 1, 1974  
Scale 1" = 300'

A	B	C	D
E	F	G	H
I	J	K	L
M	N	O	P

HUNTSBURG TWP.





47

44

45

46

37

36

35

24

25

26

230



SCALE: 1" = 300  
JAN. 1, 1974

A	B	C	D
E	F	G	H
I	J	K	L
M	N	O	P

HUNTSBURG TWP.

R. L. Rader

The Benedictine Order of Cleveland  
509-1031

552-442  
 J.P. House  
 355-41  
 349 A  
 C. Sanborn  
 C.W. Chamberlize  
 495-491  
 2.77 A  
 435-525  
 E. Mirsh  
 B. Rose 373-360  
 L. Coe 405  
 559-225 172  
 H. Mc Gannon  
 480-370  
 2.57  
 H.H. Gosselowski  
 502-917 172  
 H. Mc Gannon  
 710-310  
 434

47 127 A

48 72.80 A

49 152.50 A

36 A

20 A

237-222

30.50 A

257-94

556-952

K. Byrne

H. & M. McGannon

H.A.L. McElroy

32.86 A

156-217  
495-337

2.5 Ac.

454-309  
417-194

325-445

233-320-273

449-103

5A  
 5A  
 281-379  
 J. & O. Lang  
 516-263  
 524-800  
 R.E. Higgins

34 57.19 A

A. Sheplak

A. Miller

43 A

520-909

G.E. Neumeister

33 102 A

J. & B. Mast

J. & B. Mast

46.15 A

A. Rudowski

32 104.69 A

17.21 A

406-734  
10 A  
L. K. Button

PIONEER

ROAD

SCALE 1" = 30'  
JAN. 1, 1972

Match Line  
R. & V. Jones

27 70 A

333-403  
33.61 A

ELISA GWINN

J. & B. Lukas

242-485

50 A

L. & I. Miller

7.5 A  
C. & D. Miller

433-438

19.30

S. Detweiler

HAYES ROAD

28 38 A

C. D. Clawson 477-983

188-525  
193-39

A. & A. Misterka

100 A 29

210-526

24.50 A

R. E. Miller

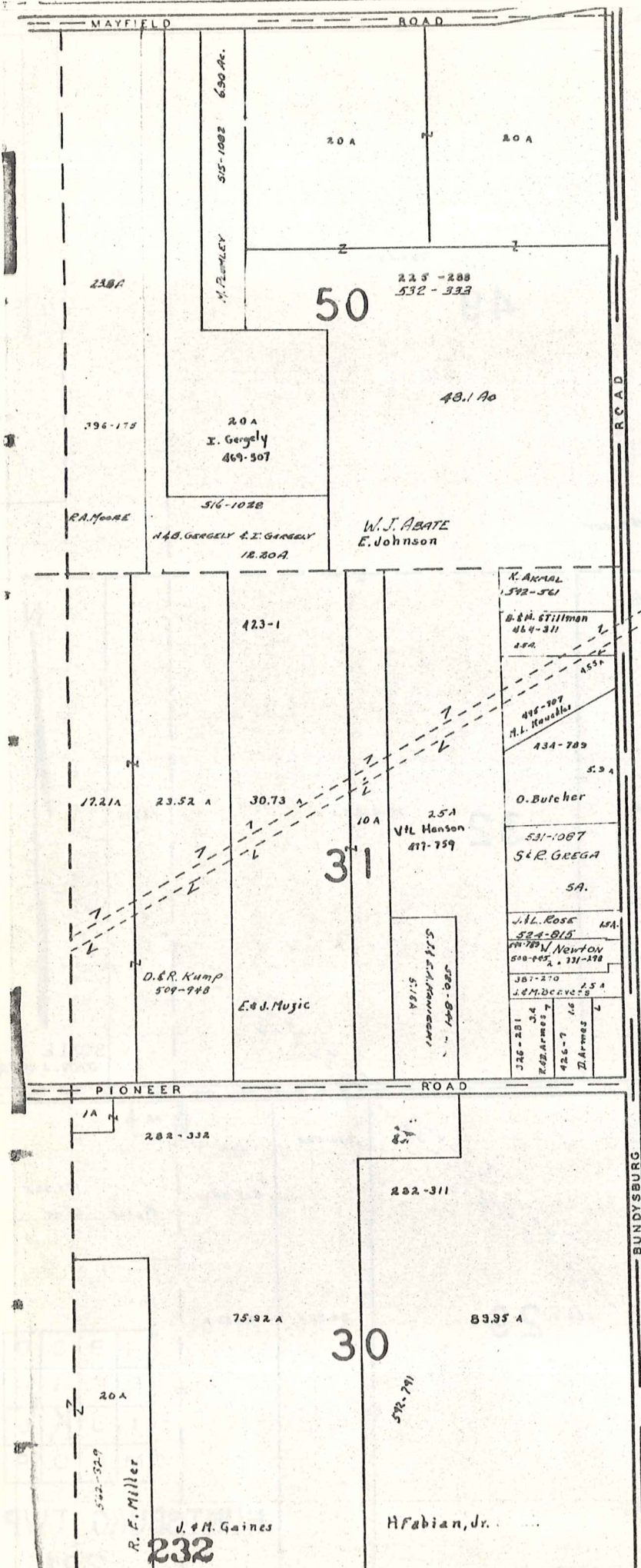
24.50 A

75.32 A  
Match Line

A	B	C	D
E	F	G	H
I	J	K	L
M	N	O	P

HUNTSBURG TWP.

231



A S H T A B U L A C O U N T Y

MAYFIELD ROAD US 322							
1	2	3	4	5	6	7	8
1.08 A	1 A	1 A	1 A	.60 A	1 A	1 A	1.13 A
403-331 R. B. Snow	431-239 F. R. Finazzo	285-498 H. Keyes et al.	E. T. Mann 471-590	1.50			

SICZ SUBDIVISION  
 VOL. 6 PG. 87  
 LOT 44  
 SCALE 1" = 100'

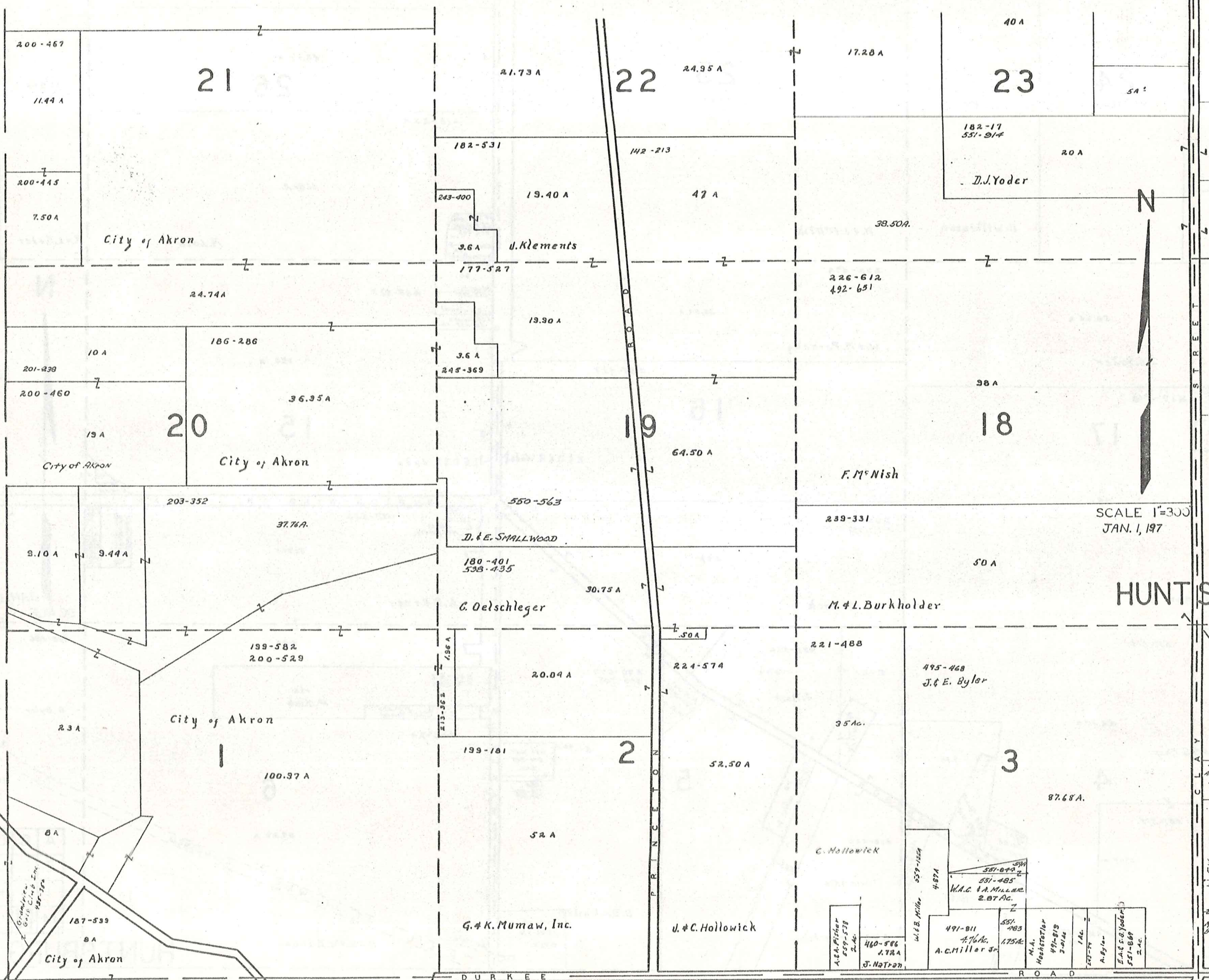


SCALE 1" = 300  
JAN. 1, 1974

A	B	C	D
E	F	G	H
I	J	K	L
M	N	O	P

HUNTSBURG TWF

C L A R I D O N T O W N S H I P

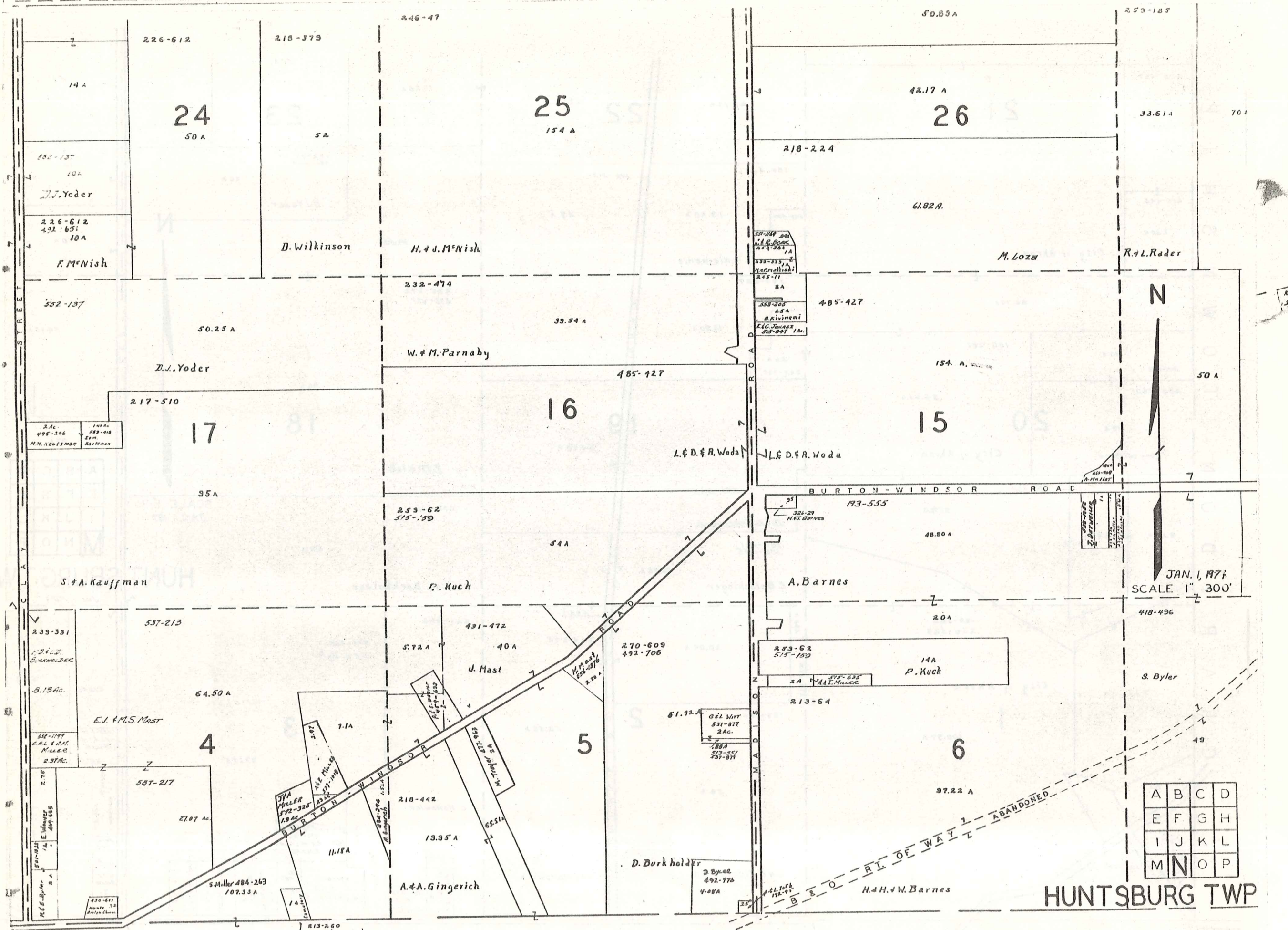


SCALE 1"=300'  
JAN. 1, 197

A	B	C	D
E	F	G	H
I	J	K	L
M	N	O	P

HUNTSBURG TWP  
JAN. 1, 1974

M I D D L E F I E L D T O W N S H I P 233



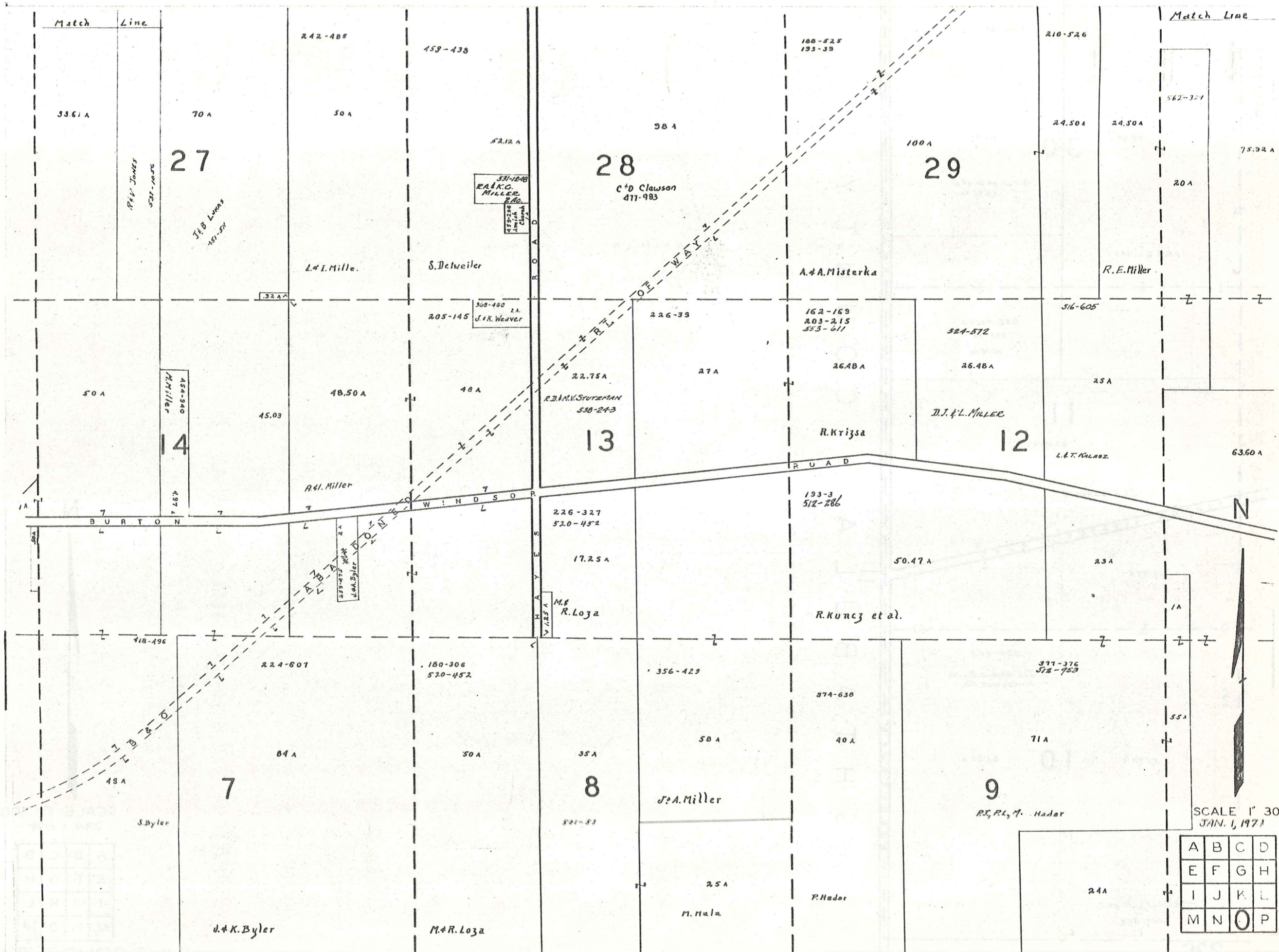
JAN. 1, 1974  
SCALE 1" = 300'

A	B	C	D
E	F	G	H
I	J	K	L
M	N	O	P

HUNTSBURG TWP

234

M I D D L E F I E L D T O W N S H I P



Match Line

Match Line

N

SCALE 1" = 300'  
JAN. 1, 1971

A	B	C	D
E	F	G	H
I	J	K	L
M	N	O	P

M I D D L E F I E L D T O W N S H I P H U N T S B U R G T W F

Match Line

202-332

202-311

204

75.92 A

30

89.95 A

J. Fabian Jr. et al  
59.95 Ac.

J. M. Gaines

D. B. MacKo  
495-35  
30.00 Ac.

520-740

11

63.60 A

J. & A. Klements

BURTON WINDSOR ROAD

18.50 A

1A

5.50 A

57.50 A

10

81.50 A

524-663

The Grand River  
Hardwood Co.

P. Teliszcak et al  
530-868

236

MIDDLEFIELD TWP.

A S H T A B U L A C O U N T Y B U N D Y S B U R G

N



SCALE 1" = 300  
JAN. 1, 1979

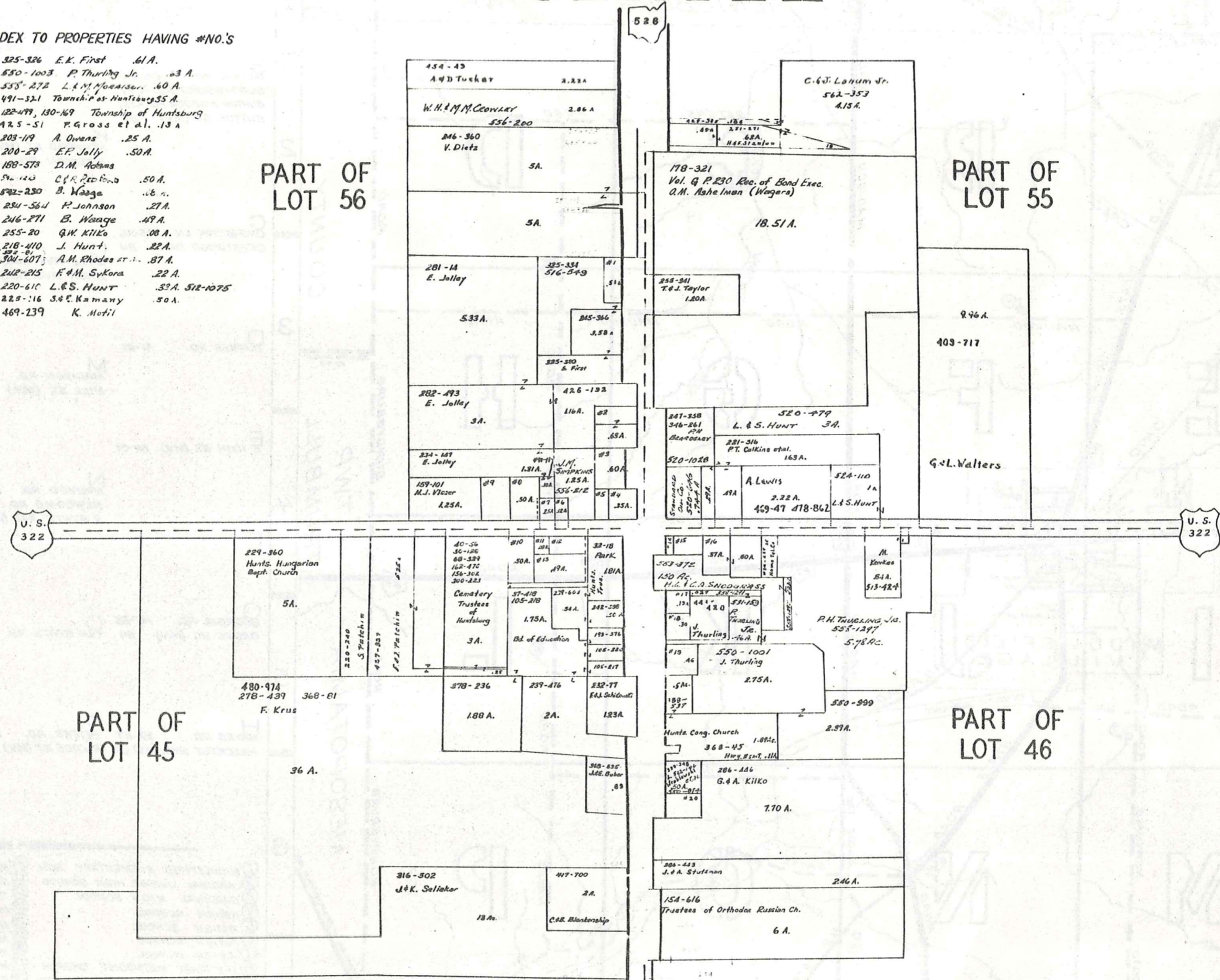
A	B	C	D
E	F	G	H
I	J	K	L
M	N	O	P

HUNTSBURG TW

# HUNTSBURG TP. CENTER

## INDEX TO PROPERTIES HAVING #NO.'S

- #1 325-326 E.K. First .61 A.
- #2 550-1003 P. Thurling Jr. .63 A.
- #3 555-272 L.H. Mooser. .60 A.
- #4 491-321 Township of Huntsburg 55 A.
- #5 122-477, 130-169 Township of Huntsburg
- #6 425-51 P. Gross et al. .13 A
- #7 203-119 A. Owens .25 A.
- #8 200-29 E.F. Jolly .50 A.
- #9 188-573 D.M. Adams
- #10 54-123 C.F. P. Ford .50 A.
- #11 522-230 B. Wadge .18 A.
- #12 234-564 P. Johnson .27 A.
- #13 246-271 B. Wadge .49 A.
- #14 255-20 G.W. Killo .08 A.
- #15 218-410 J. Hunt. .22 A.
- #16 304-607 A.M. Rhodes et al. .87 A.
- #17 242-215 F.M. Sykora .22 A.
- #18 220-610 L.S. HUNT .32 A. 512-1075
- #19 225-116 S.E. Kamany .50 A.
- #20 469-239 K. Motil



SCALE: 1 in. = 200'  
JAN. 1, 1974

